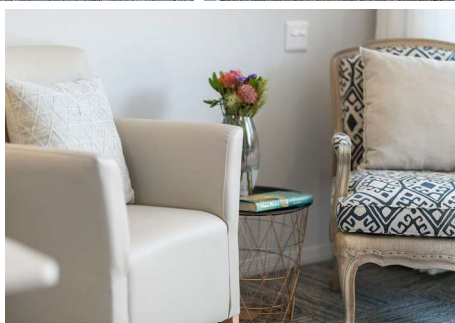
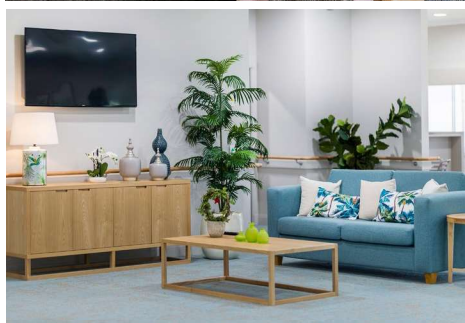


Palm Lake Care | Bargara

This guide provides essential information about Palm Lake Care's room options and associated costs. We aim to offer transparency and flexibility in our pricing to help you make informed decisions.



Room Descriptions and Pricing

A detailed explanation of all costs involved in aged care at Palm Lake Care, including Accommodation Costs (Refundable Accommodation Deposit (RAD), Daily Accommodation Payment (DAP), Basic Daily Care Fee and means tested care fee.

Classic Suite

Price: \$550,000 to \$674,000

The Classic Suite features a spacious, private environment with natural light and modern furnishings. Includes outdoor access to gardens and courtyards, spacious private ensuite bathrooms, walk-in wardrobe, individual climate control, large TV, fridge, multi-function electric king single bed, and essential safety features for a comfortable, home-like atmosphere.

Premium Suite

Up to \$778,000

The Premium Suite offers all the features of the Classic Suite, with the added benefits of premium locations within the Community.

Common questions about fees and charges at Palm Lake Care

Q: What is the Basic Daily Care Fee?

A: The Basic Daily Care Fee is a government-set fee that applies to all residents. It covers daily living expenses like meals, cleaning, laundry, heating, and cooling. The fee is set at 85% of the full single basic age pension and is reviewed bi-annually.

Q: Who pays the Means Tested Care Fee?

A: The Means Tested Care Fee is only paid by some residents, depending on a means assessment. It's a contribution towards personal and clinical care costs and can vary over time based on changes in your financial situation, care needs, or government adjustments.

Q: What does the Additional Services Fee cover?

A: The Additional Services Fee covers extra amenities and services, including 24-hour room service, access to Wi-Fi and telephone services, and an expanded activity programme. It provides enhanced services at a reduced daily rate."

Q: What are Accommodation Costs, and how do I pay them?

A: Accommodation costs are an amount that some people pay to contribute towards or cover the full costs of their room depending on their means assessment. You can pay in two ways:

- **Refundable Accommodation Deposit (RAD):** A lump sum payment that's refundable when you leave, minus any amounts used for other aged care costs.
- **Daily Accommodation Payment (DAP):** A daily payment option if you prefer not to pay a RAD or want to combine both. The DAP is non-refundable and calculated based on the RAD amount and a government-set interest rate.

RAD	DAP	COMBINATION
Refundable Accommodation Deposit with \$0 DAP	Daily Accommodation Payment (DAP) with \$0 RAD	Example of Combination 50% RAD & 50% DAP
\$750,000	\$159.86	\$375,000 lump sum+ \$79.93 per day

If you need to speak with us for a personalised quote

We'd love to assist you with understanding our room pricing and payment options, please contact us:

Palm Lake Care Bargara
1800 246 677

caresolutions@pallake.com.au
55 Wearing Road, Bargara, QLD 4670

For more detailed information

For a detailed breakdown of other fees and charges, such as the Basic Daily Care Fee, Means Tested Care Fee, and Additional Services Fee, scan the **QR** code to visit our website.

